



SUGINO

SPIRIT of JAPAN

TRACK RACING

Ver.2.0

Brand Story

Sugino has over a century of experience as a bicycle parts maker focusing on high-end parts.

Because of its reliable quality, **Sugino** also produces OEM parts for well-known complete bicycle makers.

Especially, its drive-train parts are chosen by many athletes in various competitions, such as Tour de France, Giro d'Italia, World Championship, Olympics, etc. and contribute their winnings.

Thus, with the know-how accumulated through its long experience,

Sugino can offer higher-quality parts.

SUGINO ENGINEERING CORPORATION

<http://www.suginold.co.jp>

July 2016 Sugino Printed in Japan



www.suginold.co.jp/



TRACK RACING
SPIRIT of JAPAN

SUGINO 75

DIRECT DRIVE

IDS
24

SUGINO

- New track crank with IDS24 technology comes up from SUGINO75 series, the world-famous crank used by Olympic and World Championship medalists.
- With $\phi 24$ mm axle.
- For P.C.D.144 high-end chainring.

New! Bottom Bracket

- The bottom bracket is reengineered for higher performance.
- The dust-proofing effect and rotational performance are further increased.



SUPER CERAMIC

New series in the bottom bracket lineup featuring excellent rotational performance! The high precision ceramic bearing system realizes amazing smooth rotational performance. SUGINO focused on minimizing rotational resistance in win-or-lose situations such as during acceleration and under high-load conditions.

As a result, we succeeded in reducing the resistance by 20% !



S³
S-cubic
Super Smooth Surface



S³
S-cubic
BLACK
Super Smooth Surface



Super SG75 DD 144

IDS
24

P.C.D.	: 144mm
Type	: IDS24
B.B.	: MB608(BSA) SUPER CERAMIC
Chain Line	: 42mm
Chain Size	: 1/2"x1/8"
Teeth	: 46 ~ 55T
Crank Length	: 165 / 170mm
Color	: S3 Gold / S3 Black



MB608(BSA)
SUPER CERAMIC

SG75 DD 144

IDS
24

P.C.D.	: 144mm
Type	: IDS24
B.B.	: MB608(BSA) STEEL
Chain Line	: 42mm
Chain Size	: 1/2"x1/8"
Teeth	: 44 ~ 55T
Crank Length	: 165 / 170mm
Color	: Silver / Black



MB608(BSA)
STEEL



TRACK RACING
SPIRIT of JAPAN

P.C.D. 144mm

**SG
75**
TAPER

Sugino



S³
S-cubic
Super Smooth Surface

S3(S-cubic) coating is smooth and shiny, combines high hardness with low friction coefficient for Super Series used by many of the top professionals on the track.
The S3 chainring is rigid and has less friction compared with the anodized chainring. The S3 chainring can minimize the chain driving resistance and achieve more effective power transmission. The S3 chainring will offer amazing performances at track races wherein the winner is often decided by hundredths of a second. As the abrasion speed is about a tenth of the anodized one, smooth wheeling can be maintained for a longer period of time.

BB-SG75 series

*BB-SG75 is intended to be used exclusively in combination with SG75 144 cranks and shall not be used with other cranks.



BB-SG75 SUPER CERAMIC

Bearing : Ceramic balls
Type : 4-Taper (SG75)
Cup Thread : BC1.37x24T
BB Width : 68mm



BB-SG75 SUPER LAP BB-SG75 Standard

Bearing : Steel balls
Type : 4-Taper (SG75)
Cup Thread : BC1.37x24T
BB Width : 68mm



SUPER LAP has super high quality polished ball race, BB Axle and BB Cups.



GIGAS 12T S3 Gold

Chain Size : 1/2"x1/8"
Thread : BC1.37x24T
Material : GIGAS Steel
Color : S3 Gold



GIGAS Lockring for 12T

Thread : BC1.29x24T L
Material : Cr-Mo Steel

New!

SUGINO75 CRITERIUM

Crank : SG75 144 (Black)
Chainring : PJ144 CRITERIUM
B.B. : CBB-SG75
Chain Line : 42mm



New!



CBB-SG75

Bearing : Steel balls
Type : 4-Taper (SG75)
Cup Thread : BC1.37x24T
BB Width : 68mm
Cup Material : Aluminum alloy



PJ144 CRITERIUM

P.C.D. : 144mm
Chain Size : 1/2"x1/8"
Teeth : 42 / 43 / 44 / 45 / 48T
Color : Black



Sugino 75 Super SG75 144

P.C.D. : 144mm
Type : 4-Taper (SG75)
Chain Line : 42mm (BB-SG75 series)
Crank Material : Super hard forged aluminum alloy
Crank Length : 165 / 167.5 / 170 / 172.5 / 175mm
Color : S3 Gold / S3 Black

Super ZEN144

P.C.D. : 144mm
Chain Size : 1/2"x1/8"
Teeth : 46 ~ 58T
Color : S3 Gold / S3 Black

Super MC144

P.C.D. : 144mm
Chain Size : 1/2"x1/8"
Teeth : 46 ~ 55T
Color : S3 Gold / S3 Black



Sugino 75 SG75 144

P.C.D. : 144mm
Type : 4-Taper (SG75)
Chain Line : 42mm (BB-SG75 series)
Crank Material : Super hard forged aluminum alloy
Crank Length : 165 / 167.5 / 170 / 172.5 / 175mm
Color : Silver / Black

ZEN144

P.C.D. : 144mm
Chain Size : 1/2"x1/8"
Teeth : 44 ~ 58T
Color : Silver / Black

SSG144

P.C.D. : 144mm
Chain Size : 1/2"x1/8"
Teeth : 44 ~ 55T
Color : Silver / Black

MC144

P.C.D. : 144mm
Chain Size : 1/2"x1/8"
Teeth : 44 ~ 55T
Color : Silver / Black



Sugino 75



SUGINO75 ZEN



SUGINO75 ZEN

Crank : SG75 144 (Silver)
Chainring : ZEN144 (Silver)
B.B. : BB-SG75 Standard / BB-SG75 SUPER LAP
Chain Line : 42mm

SUGINO75 SSG



SUGINO75 SSG

Crank : SG75 144 (Silver)
Chainring : SSG144 (Silver)
B.B. : BB-SG75 Standard / BB-SG75 SUPER LAP
Chain Line : 42mm

CRANKARM

CHAINRING

Bottom Bracket

SPROCKET

SUGINO75



SG75 144

P.C.D. : 144mm
Type : 4-Taper (SG75)
Chain Line : 42mm (BB-SG75 series)
Crank Material : Super hard forged aluminum alloy
Crank Length : 165 / 167.5 / 170 / 172.5 / 175mm
Color : Silver

GRAND MIGHTY



SG75 144C

P.C.D. : 144mm
Type : 4-Taper (SG75)
Chain Line : 42mm (BB-SG75 series)
Crank Material : Super hard forged aluminum alloy
Crank Length : 165 / 167.5 / 170 / 172.5 / 175mm
Color : Gold



ZEN144

P.C.D. : 144mm
Chain Size : 1/2"x1/8"
Teeth : 44 ~ 58T (*56 ~ 58T is non NJS)
Color : Silver



SSG144

P.C.D. : 144mm
Chain Size : 1/2"x1/8"
Teeth : 44 ~ 55T
Color : Silver



BB-SG75 SUPER LAP BB-SG75 Standard

SUPER LAP has super high quality polished ball race, BB Axle and BB Cups.

Bearing : Steel balls
Type : 4-Taper (SG75)
Cup Thread : BC1.37x24T
BB Width : 68mm

*BB-SG75 is intended to be used exclusively in combination with SG75 144 cranks and shall not be used with other cranks.



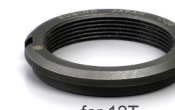
GIGAS 12T Black GIGAS 13~16T S3 Gold

Chain Size : 1/2"x1/8"
Thread : BC1.37x24T
Material : 12T : Cr-Mo Steel
13~16T : GIGAS Alloy
Color : 12T : Black
13~16T : S3 Gold



GIGAS Lockring

Thread : BC1.29x24T L
Material : Cr-Mo Steel



for 12T



for 13~16T



The name "SUGINO ZEN" comes from Japanese religion Zen.

Just before a race, Japanese racers usually meditate to keep their presence of mind and to maintain their concentration throughout the race.

Such meditation is an important part of Zen, and in the hope that a better result will be obtained with our chainring, it has been named so.



TRACK RACING
SPIRIT of JAPAN

P.C.D. 130mm



SUGINO

New!

RD2BX Messenger

Crank : RD2BX
Chainring : PJ130 MSGR
B.B. : CBBF-103
Chain Line : 45mm



CBBF-103

Axle : 103mm
Type : 4-Taper (JIS)
Cup Thread : BC1.37x24T
BB Width : 68mm
Cup Material : Steel



PJ130 MSGR

P.C.D. : 130mm
Chain Size : 1/2"x1/8"
Teeth : 42 / 44 / 46 / 48T
Color : Silver / Black



RD2BX

P.C.D. : 130mm
Type : 4-Taper (JIS)
Chain Line : 45mm (CBBF/CBBAL-103)
Crank Material : Forged aluminum alloy
Crank Length : 165 / 167.5 / 170 / 172.5 / 175mm
Color : Silver / Black



PJ130RZ

P.C.D. : 130mm
Chain Size : 1/2"x1/8"
Teeth : 42 / 44 / 46 / 48T
Color : Black
*Reversible chainring



CBBAL-103

Axle : 103mm
Type : 4-Taper (JIS)
Cup Thread : BC1.37x24T
BB Width : 68mm
Cup Material : Aluminum alloy



Cool Messenger

Crank : RD2BX (Black)
Chainring : PJ130RZ
B.B. : CBBAL-103
Chain Line : 45mm



Mighty Comp.Single

Crank : RD4
Chainring : MC130NC
B.B. : CBBAL-103
Chain Line : 45mm



RD4

P.C.D. : 130mm
Type : 4-Taper (JIS)
Chain Line : 45mm (CBBAL-103)
Crank Material : Hard forged aluminum alloy
Crank Length : 160 / 165 / 167.5 / 170 / 172.5 / 175mm
Color : Silver / Black



MC130NC

P.C.D. : 130mm
Chain Size : 1/2"x1/8"
Teeth : 42 ~ 48T
Color : Silver / Black

CBBAL-103

Axle : 103mm
Type : 4-Taper (JIS)
Cup Thread : BC1.37x24T
BB Width : 68mm
Cup Material : Aluminum alloy



RD2BX TRACK

Crank : RD2BX
Chainring : 130J TRACK
B.B. : CBBF-103
Chain Line : 45mm



RD2BX

P.C.D. : 130mm
Type : 4-Taper (JIS)
Chain Line : 45mm (CBBF-103)
Crank Material : Forged aluminum alloy
Crank Length : 165 / 167.5 / 170 / 172.5 / 175mm
Color : Silver / Black



130J TRACK

P.C.D. : 130mm
Chain Size : 1/2"x1/8"
Teeth : 44 / 46 / 48 / 49 / 50T
Color : Silver / Black

CBBF-103

Axle : 103mm
Type : 4-Taper (JIS)
Cup Thread : BC1.37x24T
BB Width : 68mm
Cup Material : Steel



FIXIE COG 3 sprockets (16T, 17T and 18T) / Cluster / Lockring set



Sprocket

Chain Size : 1/2"x1/8"
Teeth : 16-17-18T set
Material : High grade aluminum alloy
Color : Silver / Black

Cluster

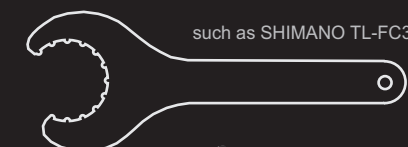
Thread : BC1.37x24T
Material : Cr-Mo Steel

Lockring

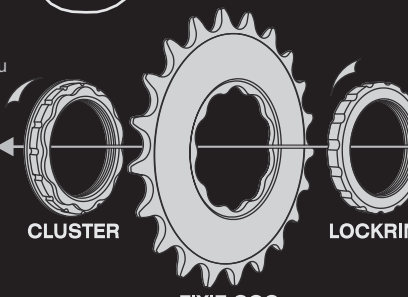
Thread : BC1.29x24T L
Material : Aluminum alloy



An external BB tool is used for securing the cluster and lockring.



The system allows you to change cog sizes easily without the need for a chain whip tool.





CHAINRING FIXING BOLTS & NUTS

Material	Model No.	Color	Bolt	Nut
New! Stainless	#401 SUS75	SUS	Hexagon	Knurled NUT
Steel	#402 CP	CP	Hexagon	Normal NUT
	#402 BCP	Black		
Aluminum alloy	#701 SL	Silver	Torx 30	Knurled NUT
	#701 BK	Black		
	#701 BL	Blue		
	#701 RD	Red		
	#701 GO	Gold		
	#701 PK	Pink		
	#701 GN	Green		

New! #401 SUS75



Knurled NUT

SUGINO 75

#402 CP

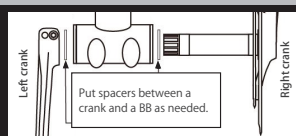


#701 BL



CRANK SPACER

Model
2 piece Crank Adjust Spacer set



Crank spacer set for two-piece cranks (Φ24mm axle). Put them between a bottom bracket and a crank to adjust a distance. Φ29 x Φ24 x t0.5mm / 3 pieces set



BB AXLE BOLTS

Model	Tool	Material	Reference
KPB	Hexagon	Cr-Mo Steel	M8×0.1
14BK	14mm		
14CP	14mm		
15CP	15mm		



CRANK DUST CAP

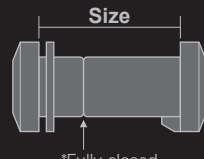
Model	Tool	Material
CNS Alloy Dust Cap (with 14 bolt)	Hexagon	Aluminum alloy

The ultra-lightweight alloy cap and axle bolt set for square taper crank. The wide range of colors allows you to choose the most suitable one for your bike.



SEATPOST CLAMP BOLT

Model	Size	Tool	Material
Seatpost Clamp Bolt	17mm	Hexagon	Cr-Mo Steel (CP finish)
	19mm		
	22mm		
	25mm		



*Fully closed

TOOL for 4-Taper

CRANK EXTRACTOR

Model	Tool
Extractor #202	15 Hexagon Socket
Extractor #203B	14 Hexagon Socket

B.B. TOOL

Model	
TL-CBB	for CBB-SG75, CBBAL, CBBF

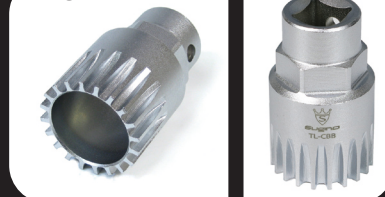


15 Hexagon Socket



14 Hexagon Socket

TL-CBB



New! FUMIKIRI Lockring



FUMIKIRI Lockring

Thread : BC1.29x24T L
Material : Cr-Mo Steel

*For 13T and larger sprockets

An external BB tool is used for installation and removal.

FUMIKIRI



such as SHIMANO TL-FC32

Tubular Tape & Rim Cement Remover for carbon rim



Roller & Adapter



Wheel stand

Features

By using on drill or air tools, you can clean the rims more efficiently. The roller made of the composite rubber, free from polishing agent and abrasive grain, can remove adhesive residue without damage to carbon fiber rims.

Instruction

1. Use the electric drill or air tools with 2500~3000 rpm, and attach the "adapter" on the tip of tool.
*At a low speed, the cleaning work will not be performed efficiently.
*The adapter is sold separately.
2. Tighten the "roller" to the "adapter".
3. Lightly press the roller to the residue on the rim with electric drill/air tool rotating in the clockwise direction.
*Please be sure to hold the rim firmly during the work.

Caution

- *Please be careful that the rim may become hot during the work, but which will not affect the carbon fiber.
- *Please don't hold the roller too long on any one spot on the rim when using it on air tool or electric drill.
- *Don't use the roller when it is worn to the "line" marked on it.

